

PLAN OF STADIUM BIATHLON OSRBLIE



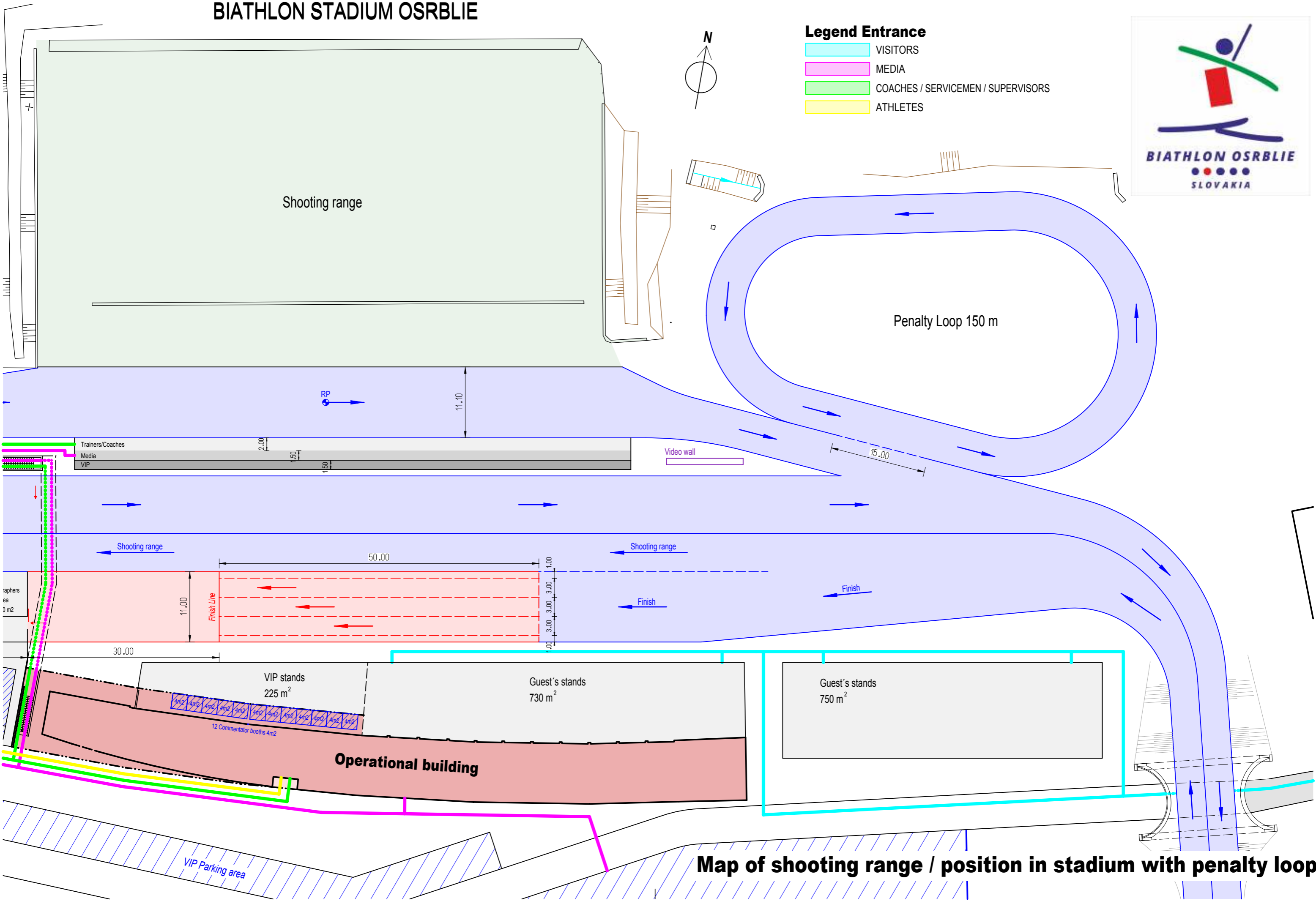
- 1 Waxing Areas & Team Cabins
- 2 Course
- 3B Shooting Range Coaches Zone
- 4A Warming up Area before Start
- 4B Finish Exit Area
- 5 Start and Finish Area
- 6 Competition-Office
- 7 Technical Areas
- 8 Antidoping Control Area
- 9A Presscenter
- 9B Mixed Zone
- 9C Media Area at Shooting Range
- 9D Fotographer Areas
- 10 Preliminary Material Control
- Y Biathlonfamily Club
- Z V.I.P. AREAS
- U Underpass



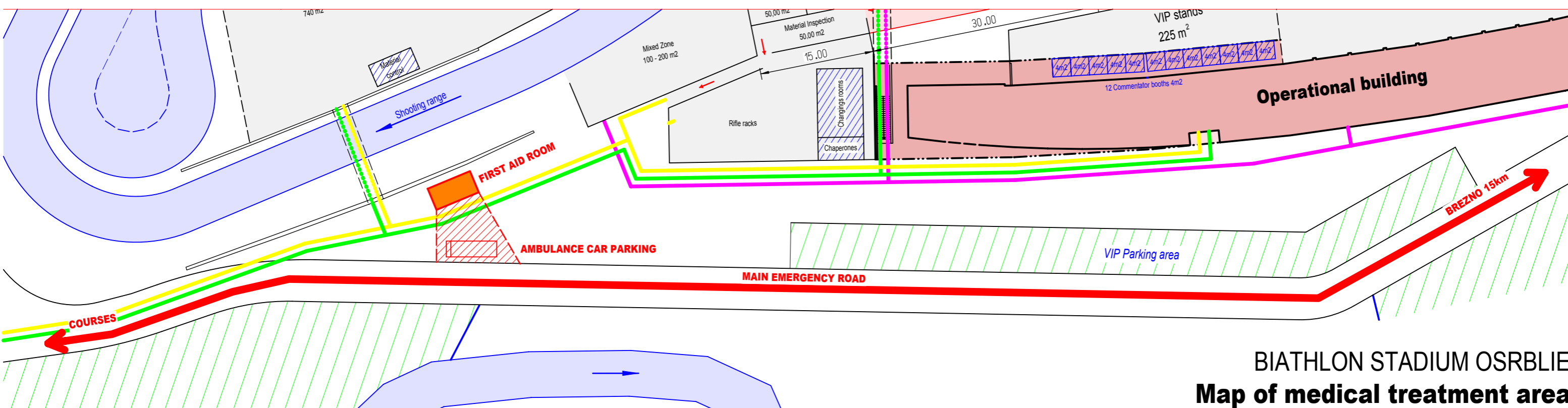
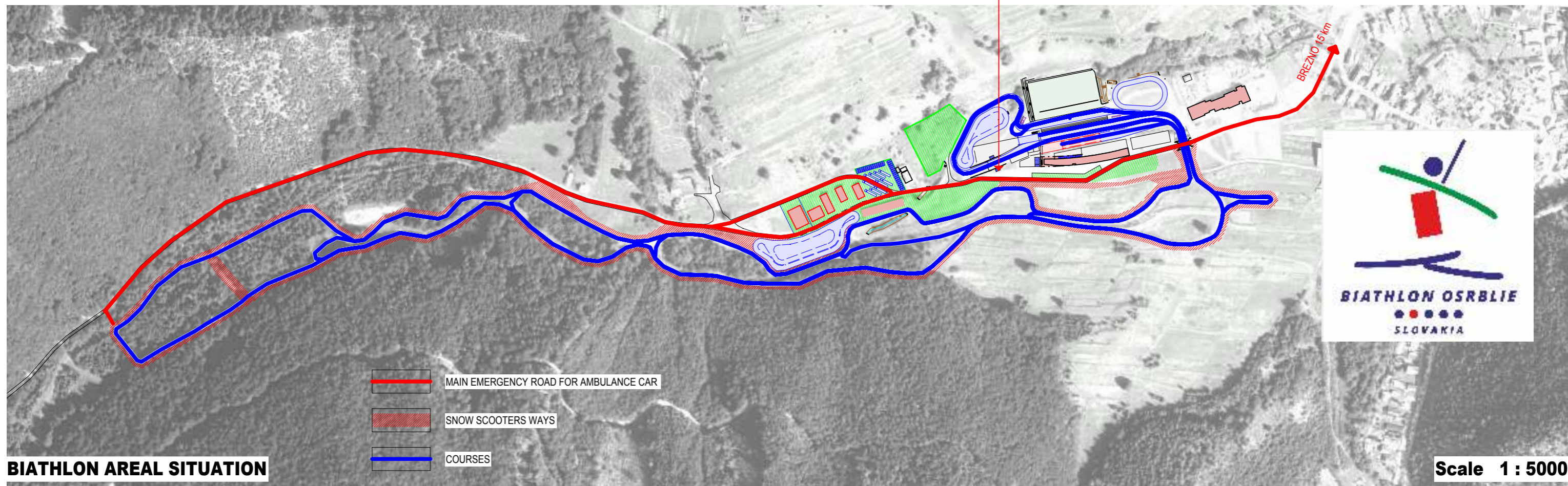
BIATHLON STADIUM OSRBLIE

Legend Entrance

- VISITORS
- MEDIA
- COACHES / SERVICEMEN / SUPERVISORS
- ATHLETES

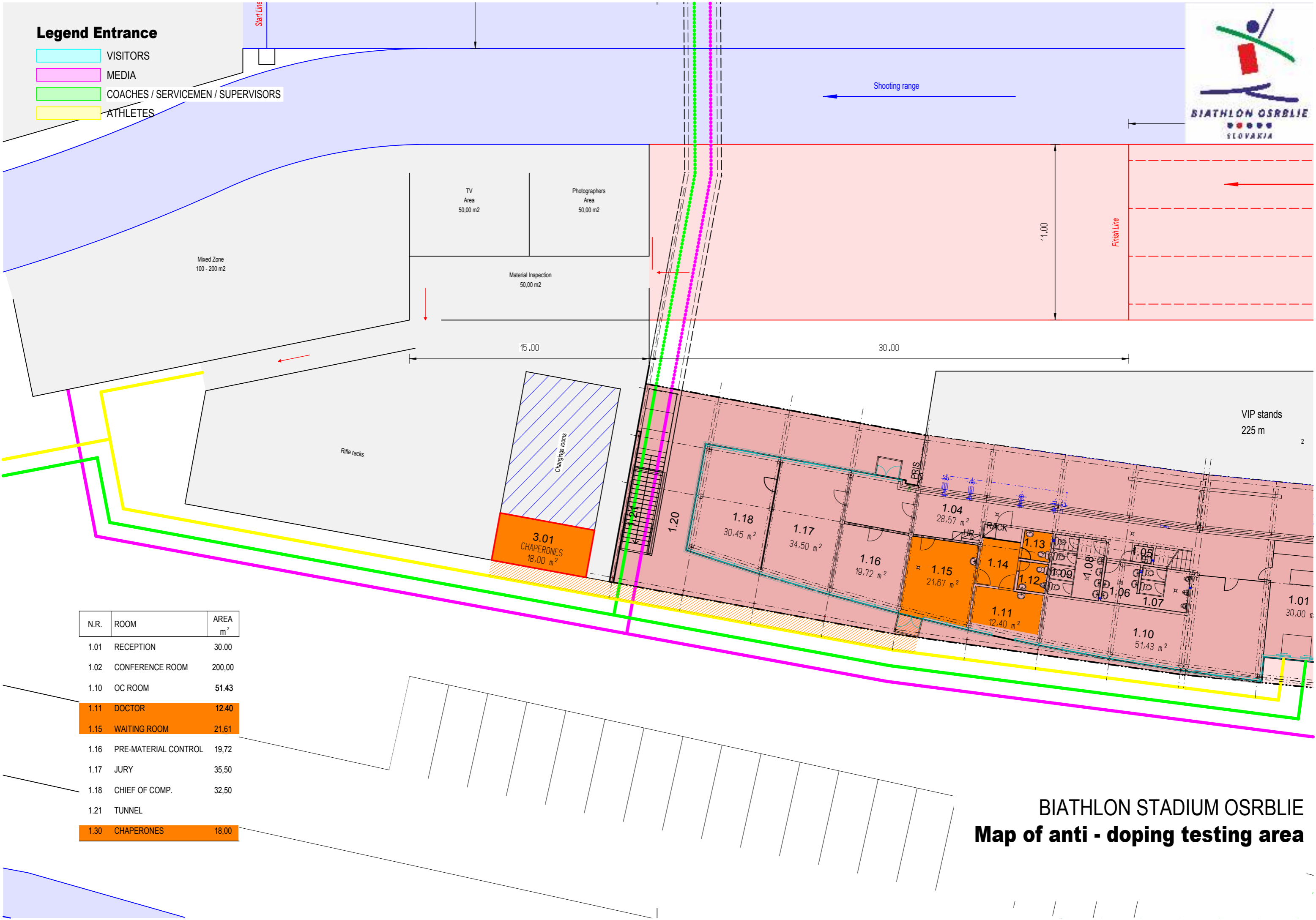


Map of shooting range / position in stadium with penalty loop



Legend Entrance

- VISITORS
- MEDIA
- COACHES / SERVICEMEN / SUPERVISORS
- ATHLETES



N.R.	ROOM	AREA m ²
1.01	RECEPTION	30,00
1.02	CONFERENCE ROOM	200,00
1.10	OC ROOM	51,43
1.11	DOCTOR	12,40
1.15	WAITING ROOM	21,61
1.16	PRE-MATERIAL CONTROL	19,72
1.17	JURY	35,50
1.18	CHIEF OF COMP.	32,50
1.21	TUNNEL	
1.30	CHAPERONES	18,00

BIATHLON STADIUM OSRBLIE
Map of anti - doping testing area